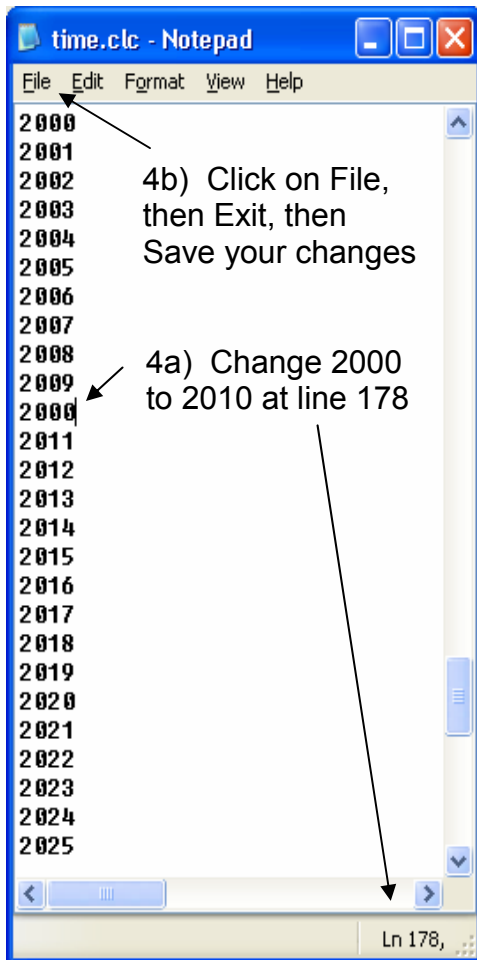
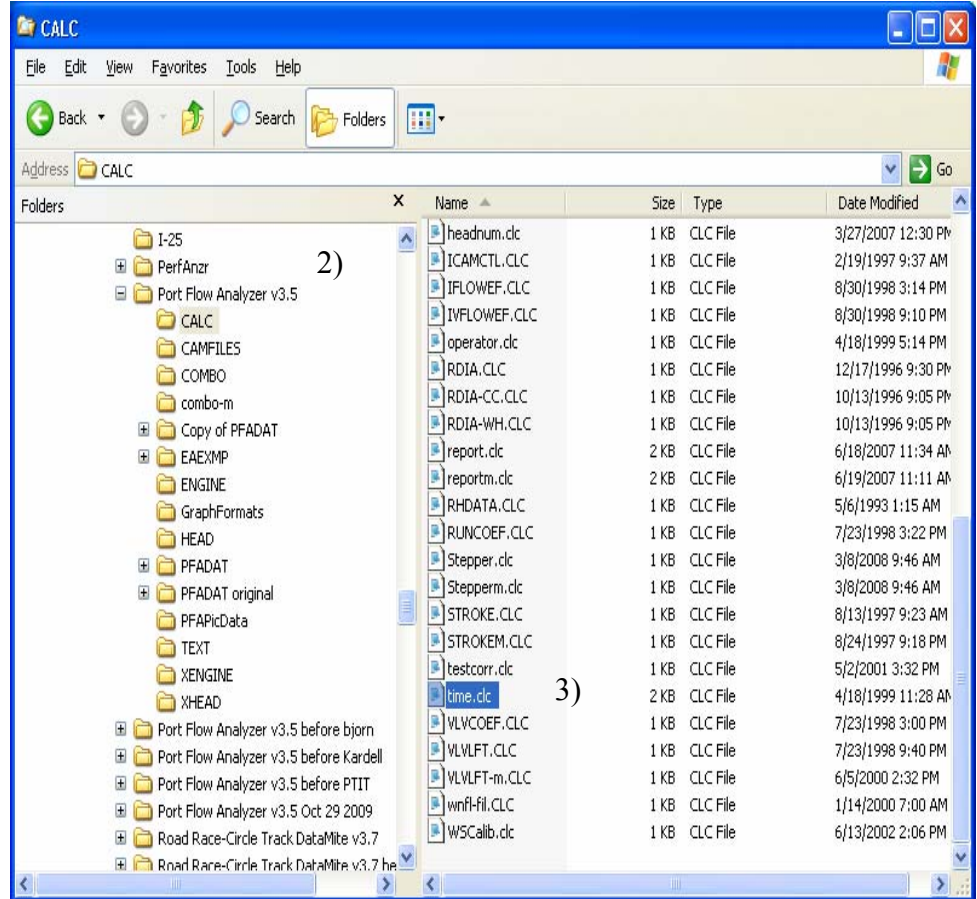
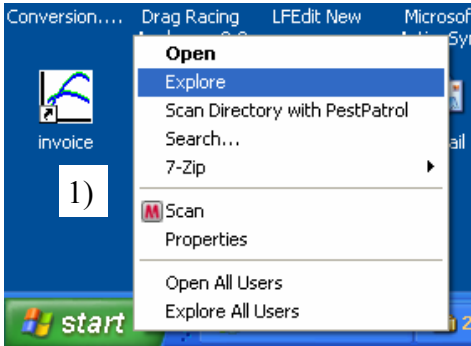


# Fixing 2010 Date Bug in Port Flow Analyzer

The Port Flow Analyzer has a bug where you can not select the year 2010 as a date for your test. If you own v3.5, you can download the latest version from our website's download page and have this fixed. If that is difficult, or you have v3.0, you can easily fix the bug as follows.

- 1) Right click on Start and click on Explore to open Windows Explorer
- 2) Find the PFA30 folder under PerfTrns.pti folder on the C drive for v3.0. Find the Port Flow Analyzer v3.5 folder under the Performance Trends folder under Program Files folder on the C drive for v3.5.
- 3) Open up the CALC folder and find the **time.clc** file. Right click on it and select **Open With** and select **Notepad**.
- 4) In Notepad, scroll down to about line 178. You will see the year 2000 where 2010 should be. Change 2000 to 2010 and then click on File (upper left), then Exit and when it asks if you want to save your change, say Yes. Now the year 2010 will appear in the list of choices in the Port Flow Analyzer program.
- 5) IMPORTANT: Do NOT add any additional lines to this file. If you think you may have done this, click on File, then Exit and answer NO to saving your changes and try it again.



4b) Click on File, then Exit, then Save your changes

4a) Change 2000 to 2010 at line 178