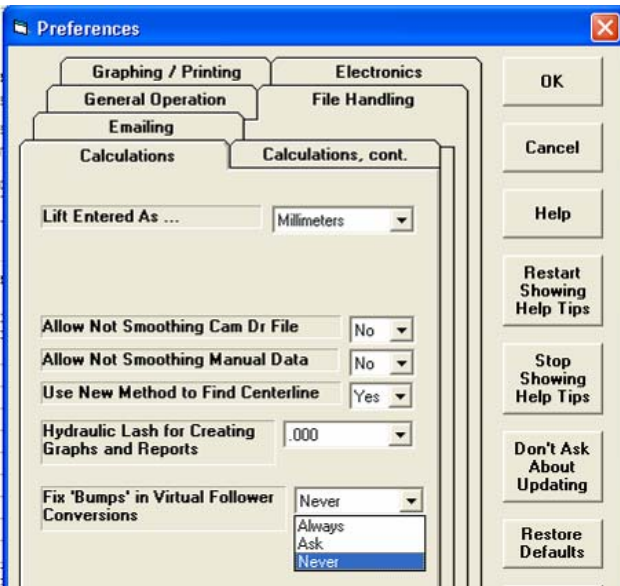
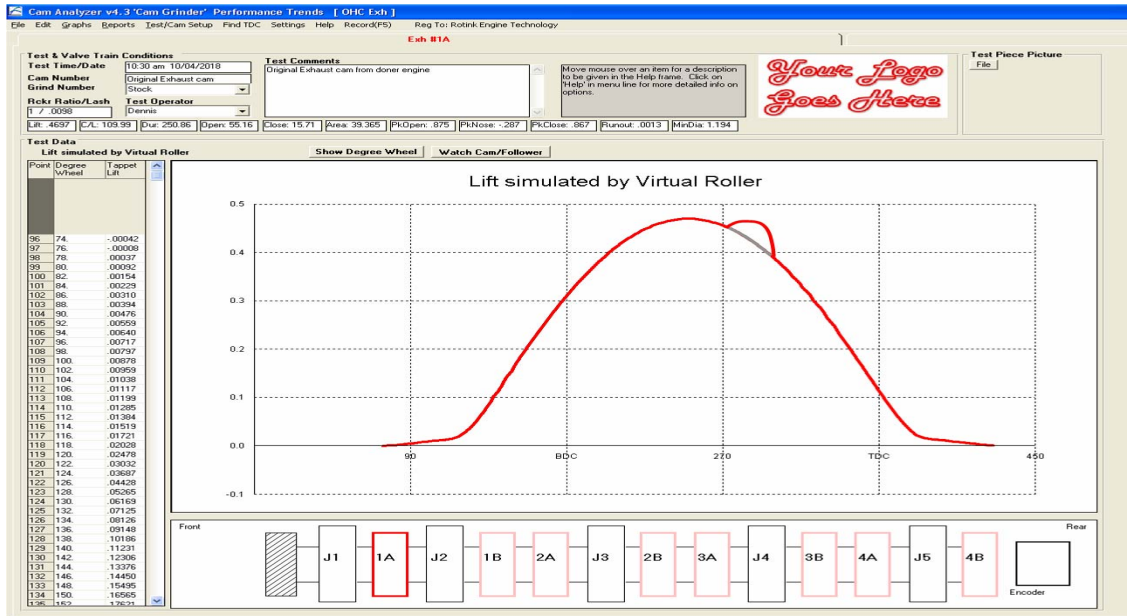


# Fixing bump produced by Virtual Follower

The Virtual Follower process can produce strange results if there is even a minor measurement error in the raw data. See the picture to the right. Typically these errors are from importing a cam profile from a system different than our Cam Test Stand.

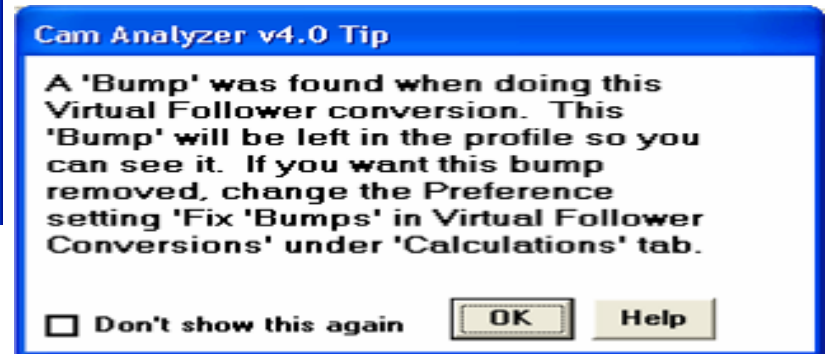
The Cam Analyzer v4.3 A.004 or later will check for this and give you some options, depending on the Preference setting shown below



If you selected "Ask":



Or if you selected "Never":



With the bump fixed, the profile will be this:

